

A map of the Duwamish River area in Seattle, Washington, showing various Native land territories. The map is color-coded: blue for water, green for forested land, and various shades of yellow, orange, and purple for different land ownership or historical territory areas. A large black text overlay reads "Native-land.ca". A callout box points to a specific area labeled "Duwamish Coast Salish". Other labels on the map include "Suquamish", "Duwamish", "Coast Salish", and "Duwamish".

Native-land.ca

Duwamish
Coast Salish

Suquamish

Duwamish

Coast Salish

Duwamish

Export Map

☒ Colors ☐ Labels

© Mapbox © OpenStreetMap contributors







a brief history of consumption



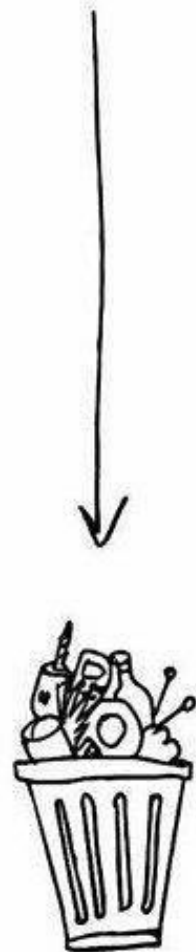
wronghands1.wordpress.com



© John Atkinson, Wrong Hands



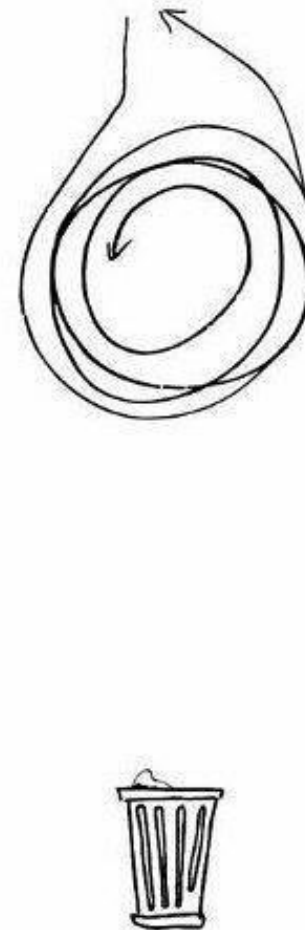
LINEAR ECONOMY



RECYCLING ECONOMY



CIRCULAR ECONOMY



There is no such thing as waste in nature.













HOLD

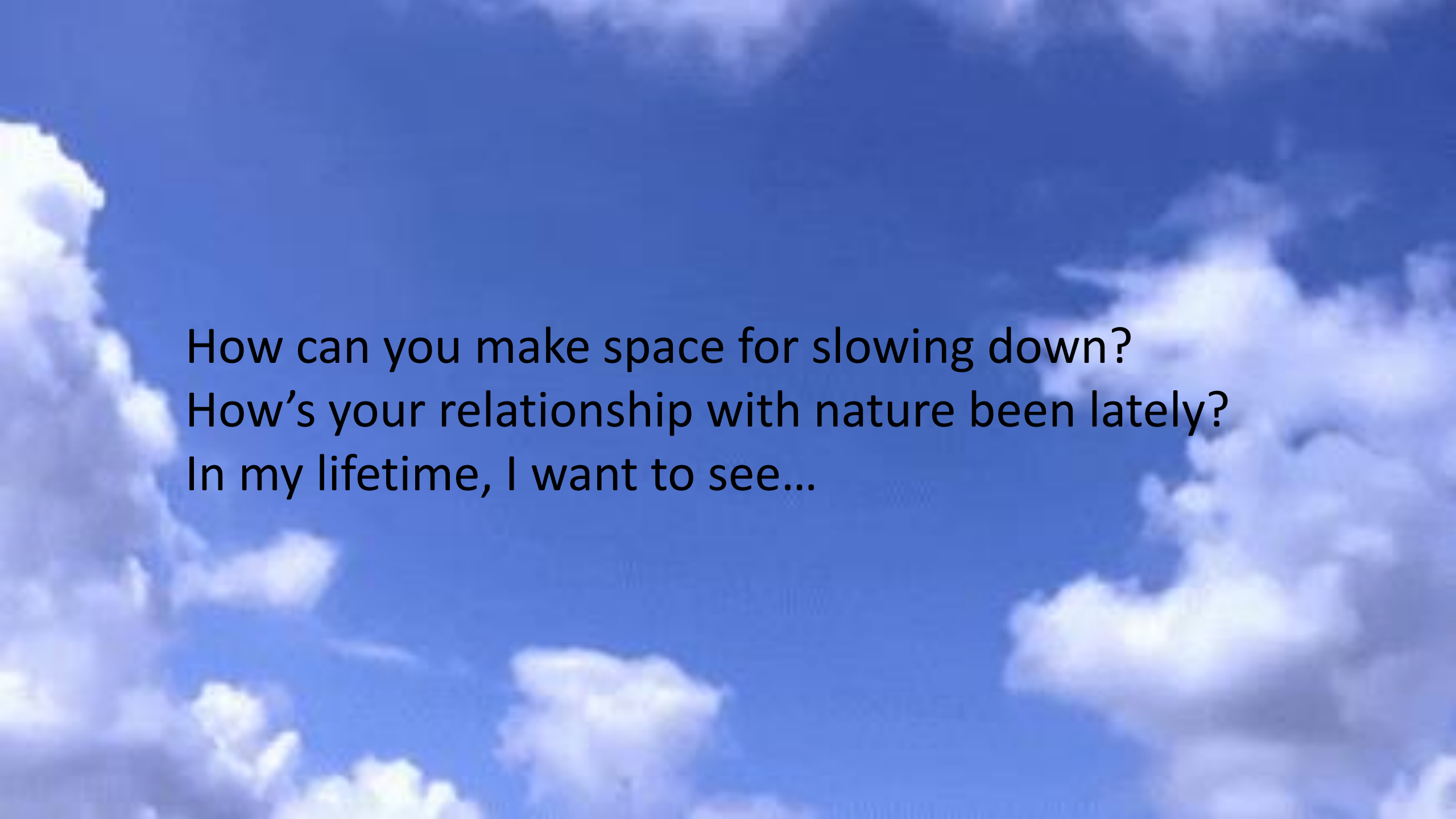
INHALE

EXHALE



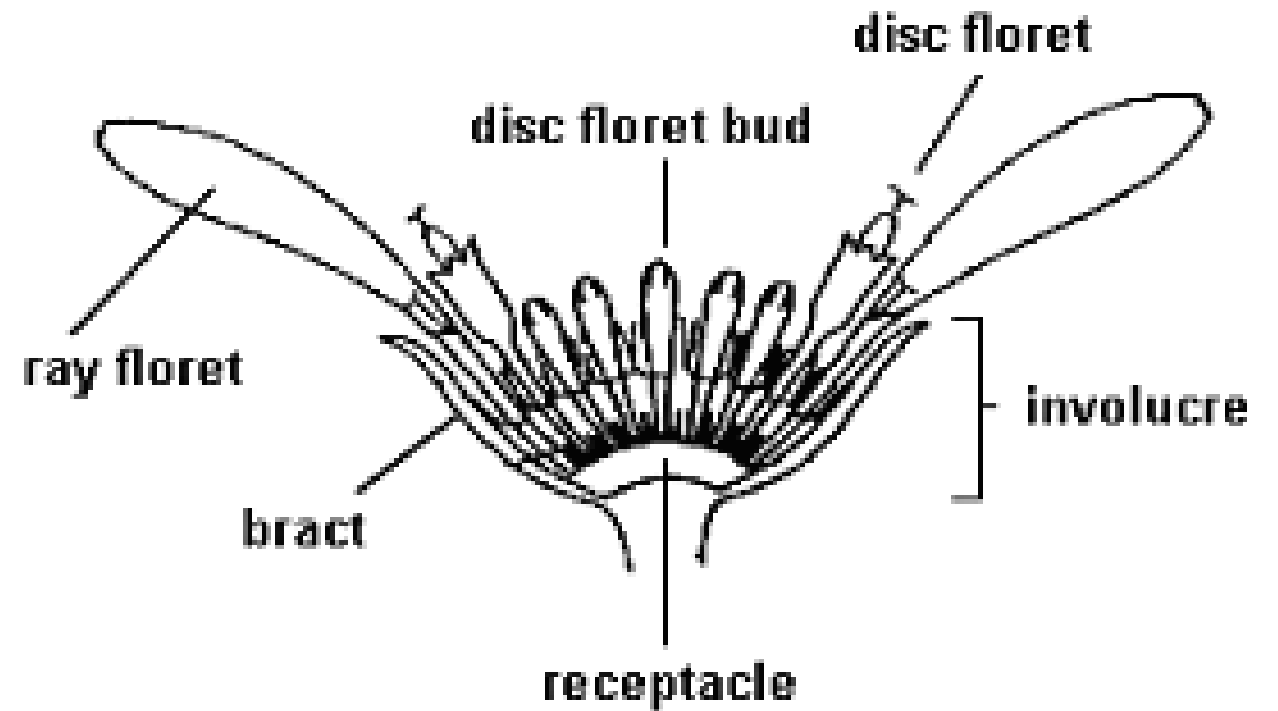
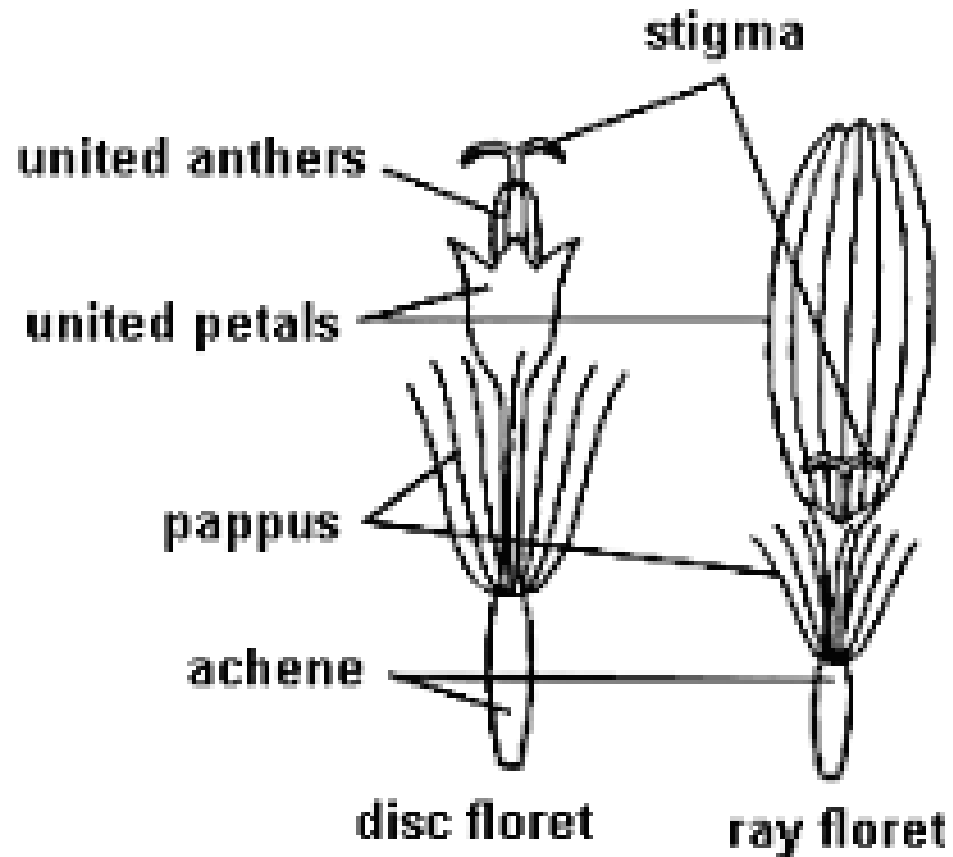
HOLD

How's your relationship with those aged lately?
How's your relationship with those aged lately?



How can you make space for slowing down?
How's your relationship with nature been lately?
In my lifetime, I want to see...

PARTS OF AN ASTER FLOWERHEAD





Let's hear what you think...



NORTHWEST
STRATEGIC ENERGY MANAGEMENT
COLLABORATIVE